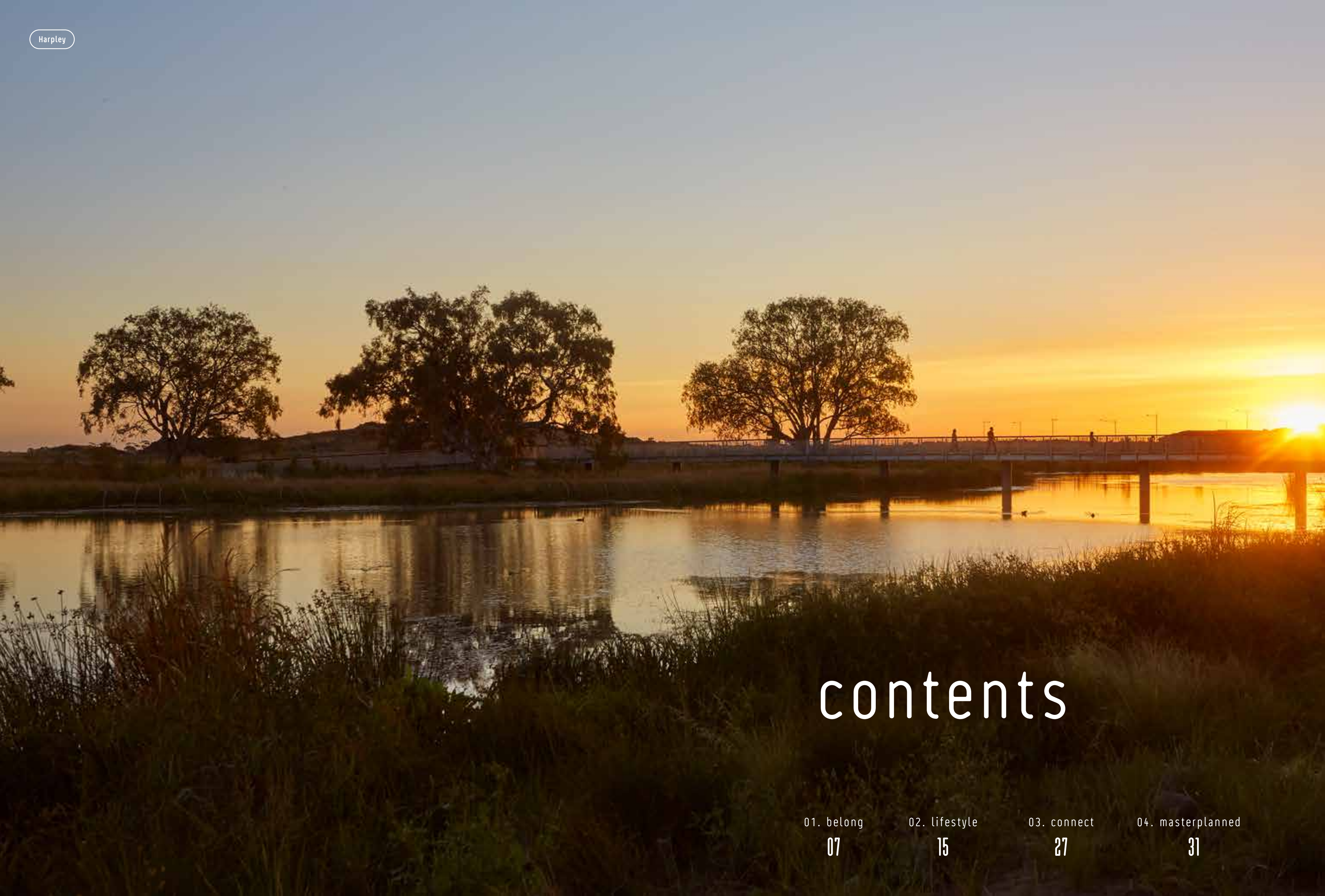


Harpley

Life by the water



lendlease



contents

01. belong	02. lifestyle	03. connect	04. masterplanned
07	15	27	31

Imagine opening your front door
in the morning and emerging in a
beautiful lakeside parkland.

Welcome to the reality of
Harpley, life by the water.

Set amongst a natural landscape

With ancient river red gums, a series of interconnected waterways and an abundance of birdlife and native plants.

Harpley, your place amongst nature.

“Having neighbours that you get to know, you trust them, you build your own little extended family with them.”

Kerrie, Harpley resident



01

belong

Every day begins and ends with a sense of belonging.



Home

Harpley creates the same welcoming sense of neighbourhood we felt as children, a friendly, safe and self-sustaining community of like-minded families and individuals... a place where you'll truly feel you've come home.

“The waterways are beautiful, the swans, the animals... I can teach my children about nature.”

Chantelle, Harpley resident



Live in a fantastic community

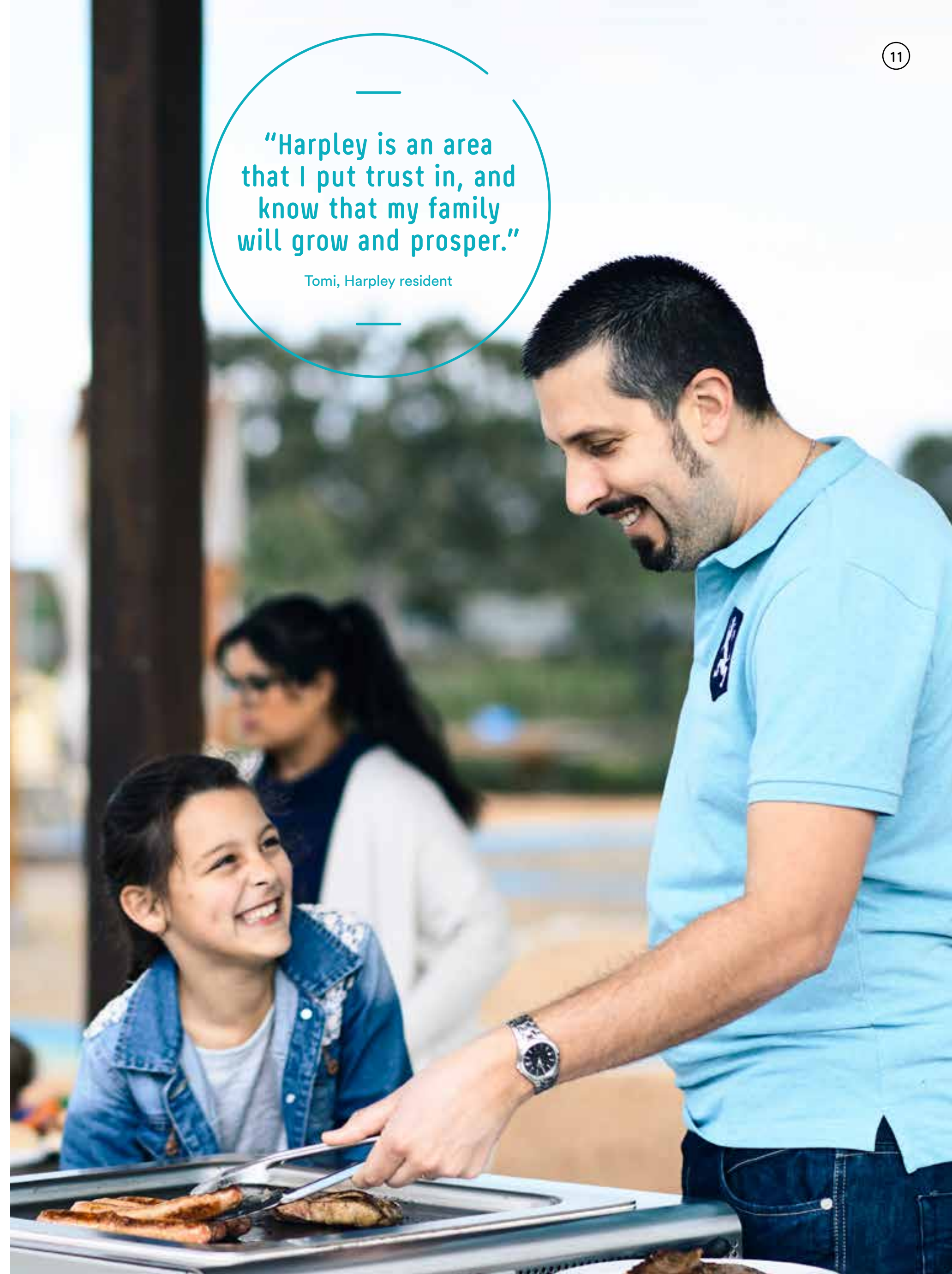
There are no strangers in Harpley, just friends you're yet to meet.

Whether it's spending time with the family at a nearby village playground or sporting field, or catching up with the neighbours for a friendly BBQ, you'll feel right at home from the moment you move in.



"Harpley is an area that I put trust in, and know that my family will grow and prosper."

Tomi, Harpley resident





Harpley isn't simply a lifestyle... it's a collection of experiences.

Discover a diverse range of local groups, clubs, activities, sports and community events.



Come home to a place where life flourishes. From the day you move into your new home at Harpley, you'll be welcomed into a close-knit friendly community where everyone shares a lifestyle others can only dream about. Harpley offers so much for you and your family.

- Regular neighbourhood events, festivals and get-togethers
- A well-connected community with a thriving social media network where you can share news, ask advice and make new friends
- Community play and picnic areas where families and friends congregate
- A strong network of community groups offering fitness training, mums and bubs groups, sporting clubs and special interest activities such as gardening, healthy cooking, movies, music and art



—
“For us, who like nature,
seeing the lakes, the
parks and all the space at
Harpley, that’s one of the
things we really like!”
—

Nick & Meryl, Harpley residents

02

lifestyle

We can't imagine living anywhere else.

Harpley trails

Enjoy the wealth of hiking and bike trails, parks, lakes, sporting and recreation venues outside your door.

The Harpley Discovery Trail has stories of local Indigenous culture, European settlers and information on the importance of wetlands for habitat and water quality.

harpleydiscoverytrail.com.au





Education

Harpley is a community designed to grow with your family with a range of education facilities proposed for development. Featuring childcare, kindergarten, playgroups, maternal and child health services and a primary school, the Harpley town centre's community centre will become a central destination for early learning.

It is proposed Harpley will have its own government primary school, independent primary school and government secondary school, while nearby Werribee hosts campuses of the state's leading universities.

01

Wallaby
Childcare Centre
already open

03

Proposed
schools for
Harpley

12

Education
facilities
within the
region

The town centre
will form the heart
of the Harpley
community.

Harpley town centre

With stunning vistas of the parklands and waterways and a wide range of shops and services, the Harpley town centre will provide the perfect destination for meeting friends or making new ones. Proposed for the town centre are:

- Supermarket and selection of specialty shops
- Restaurants and cafés
- Council community centre, including kindergarten
- Private childcare centre
- State primary school
- Medical centre and chemist
- Range of professional services

Surrounding area



Werribee Open Range Zoo

The Werribee Open Range Zoo, situated a mere 15-minute drive from Harpley, is sure to entertain both children and adults. The Zoo offers a unique opportunity to experience African-inspired adventures, providing an ideal activity for the whole family to enjoy.



Werribee Mansion

Discover the Victorian era in Australia with a visit to Werribee Mansion. Just a short drive away from Harpley, the Mansion is a living, breathing postcard of the 19th century and a must-see attraction. The Mansion grounds are also home to the Victorian State Rose Garden.



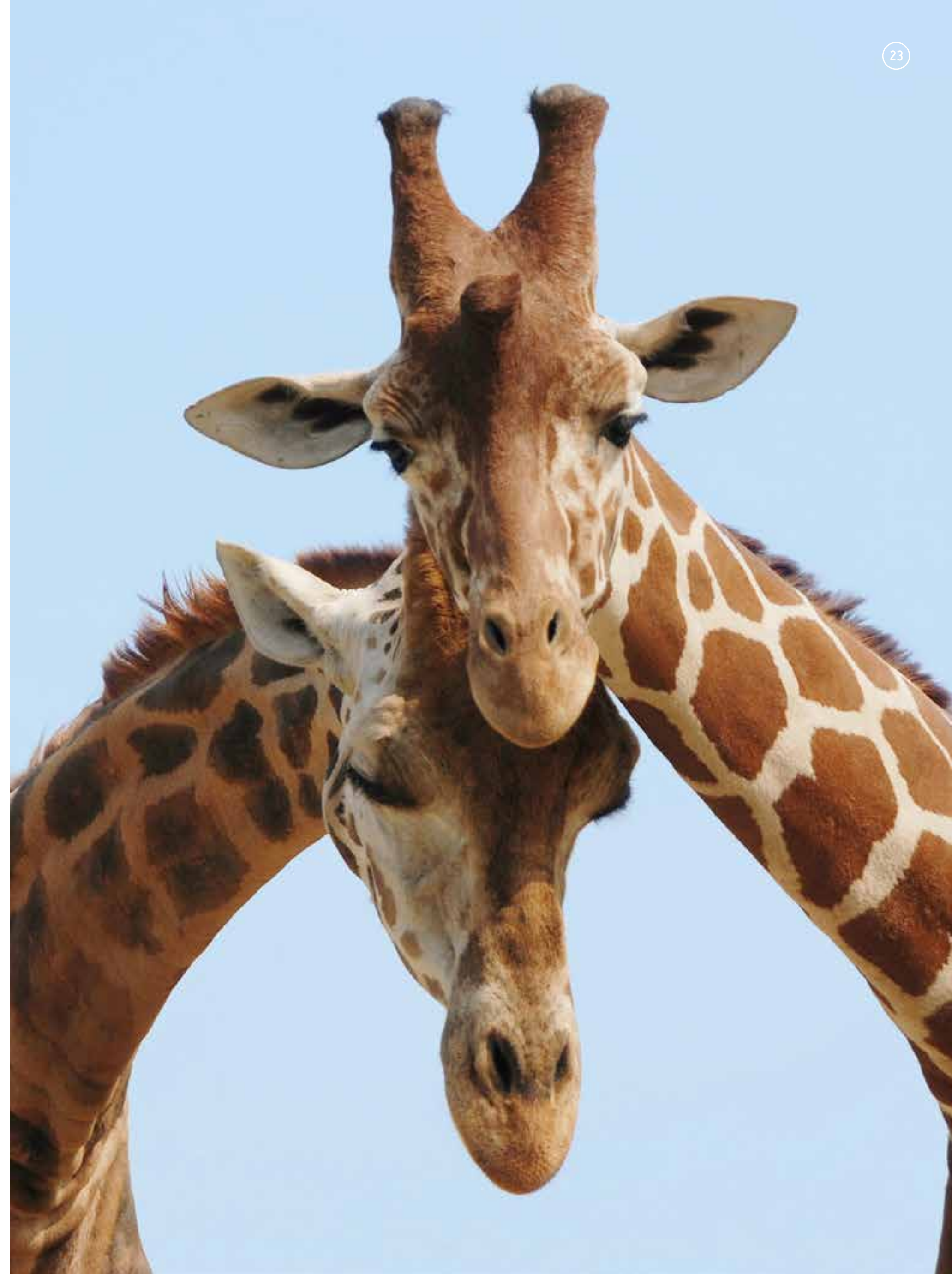
Shadowfax

Shadowfax, a boutique winery established in 1998 is located just 10km from Harpley. Dedicated to creating high quality, handcrafted wines, you'll be sure to enjoy a weekend afternoon spent sipping on a glass or two. During summer Shadowfax also offers late nights, special events and live music.



You Yangs National Park

Enjoy the natural wonders of the You Yangs National Park. Perfect for an active weekend of hiking or mountain biking. The distinctive granite peaks of the You Yangs rise from the volcanic plains between Melbourne and Geelong. The You Yangs offer more than 50kms of mountain bike trails, magnificent views, birdlife, rock-climbing and abseiling, bushwalks and picnics.



Sustainability



6 Green Star Rating*

From the moment you arrive in Harpley, you become immediately aware of its stunning parklands and waterways, thoughtfully designed to complement and enhance the natural environment.



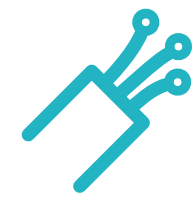
Class A recycled water to all homes



Low energy street lights



Nearly 26km of walking and bike trails



Fibre optic connectivity



More than 60 hectares of dedicated waterways and surrounds that enhance and encourage the natural birdlife, plants and trees

Harpley was the first 6 Star Green Star community in Melbourne's west (December 2016).

By working closely with our residents and home builder partners, we're ensuring new homes at Harpley are built to the highest standards of environmentally-friendly design, energy-efficiency and sustainable landscaping.

*Green Building Council of Australia, December 2016.



03

connect

36 minutes from Melbourne CBD.

Connected living

Easy access

\$1.8 

billion investment on Western Suburb's road upgrades, new roads and maintenance works

Enveloped by the beauty of Harpley, it's easy to forget that Melbourne's CBD is just over 35km down the Princes Freeway.

Neighbouring Geelong and the Great Ocean Road are similarly within comfortable reach. At Harpley, you're just minutes away from Werribee's buzzing Watton Street, with easy proximity to local trains, buses and regional and city airports.

Werribee is well-served with trains, with both the Werribee Station and the Regional Rail Link Wyndhamvale Station only a few minutes drive from Harpley.

80 

additional train services have been added in 2017

A new city vision

\$250 million worth of major projects are set to reshape the Werribee City Centre as the 'Capital of Melbourne's New West'. The Werribee City Centre will be transformed into a waterside oasis as part of a redevelopment that includes new office space, retail, dining, parking, community learning hubs, childcare, apartments and accommodation.

Each project will embrace the centre's parkland and unique river aspects. It will see the heart of Werribee transformed into a thriving place where people will work, live and play.

To find out more, head to wyndham.vic.gov.au and keep up to date on all the latest developments in the local area.

250  million

worth of major projects are set to reshape the Werribee City Centre as the 'Capital of Melbourne's New West'



04

A masterplanned community

Everything has been thought of that I want in my community.

Harpley masterplan



TRANSPORT

- 1 Proposed link to Princes Freeway
- 2 Proposed bridge over rail line
- 3 Proposed future train station

RECREATION

- 4 Proposed public sports fields
- 5 Wyndham Vale South Sports Reserve
- 6 Wyndham Vale Reserve
- 7 Adventure Playground and Cultural Park
- 8 Harpley Discovery Trail

EDUCATION

- 9 Proposed private primary school
- 10 Proposed Government primary school
- 11 Proposed Government secondary school

COMMUNITY

- 12 Proposed community facility
- 13 Wallaby Childcare Centre

SHOPPING

- 14 Future waterfront Harpley Town Centre

Existing and proposed pedestrian bridges

Information as per approved precinct structure plan. The delivery of the Community Centre and schools is subject to planning approvals and Council State commitment. The information contained in this plan has been prepared from third party sources current as at the time of publication; no warranty, express or implied, is given as to the accuracy of the information in this plan nor does Lendlease accept any responsibility for any inaccuracies or omissions. Artists' impressions and images are for illustrative purposes and are indicative only. The development may not be identical to the images shown or the development described. Prospective purchasers should make their own enquiries as to the details of the development which may be subject to change without notice. Any information contained in this plan should be read subject to the terms of an agreement of sale. This plan was produced by Harpley and is current as at July 2017.

Harpley amenities



Melbourne CBD

Werribee Mercy Hospital

Werribee Mansion & Open Range Zoo

Pacific Werribee Shopping Centre

Point Cook

Shadowfax Winery

Werribee City Centre and Train Station

Imaroo Community Centre

Eagle Stadium

Imaroo Primary School

Werribee Racecourse

Wyndham Vale Shopping Centre

Gordon O'Keefe Reserve

Wyndham Vale Train Station

Wyndham Vale Primary School

Future Harpley Primary School

Wallaby Childcare Centre

Future Harpley Primary School

Future Harpley Town Centre

Future Harpley Secondary School

Black Forest Road

McGrath Road

Bulban Road

Princes Freeway

Future Princes Freeway Link

Regional Rail Link

Melbourne - Geelong Rail

Fast facts

Community And Population

8000 m² 

retail floor space for proposed waterfront Harpley Town Centre



Restaurants
and cafes


435 hectare 

masterplanned community

12,000 residents on completion

Location and Transport

3 km  west of Werribee CBD


south west of Melbourne CBD  35 km


40 km north east of Geelong CBD 

 Bus from Harpley to train stations

Future planned road connection to link Harpley directly with the Princes Freeway

Parks and Open Spaces

60 hectare  of dedicated waterways and surrounds

proposed sports fields  15 hectare

26 km  planned hike and bike trails

9 hectares of proposed village parks and gardens 

Sustainability

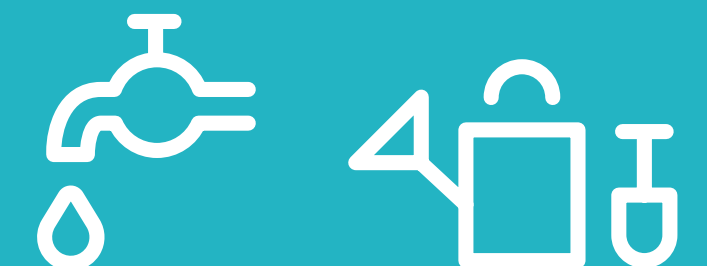
 Fibre optic network connection provided to all homes

Low energy street lights 

green star  6  sustainability rating*

*Green Building Council of Australia, December 2016.

Class A recycled water system to all homes for toilet flushing and garden use



Our communities

For over 50 years, Lendlease has been dedicated to creating the best communities in Australia. Victorian communities include the award-winning Caroline Springs and our current masterplanned communities, Atherstone, Aurora and Harpley.



Caroline Springs

Named Australia's best masterplanned development in 2006 by the Urban Development Institute of Australia. The heart of the community boasts a 7.8 hectare recreational lake.



Atherstone - Strathtulloh

Atherstone will have everything you need to build your new life. Set against the backdrop of a stunning creek and lush parklands that provide a natural buffer to the outside world, Atherstone will be more than a beautiful location; it will be a real community.
atherstone.com.au



Aurora - Epping North

Build a home in the place you already know and love. This is a community with its eye on the future, where everything you need is in easy reach and everything you want and more is on the way.
auroravic.com.au



harpley.com.au

The information contained in this brochure was correct as at November 2017. The development is subject to planning approvals and may not be identical to the images shown or the development described and the developer reserves the right to make changes without notice. Artist's impressions are for illustration purposes and are indicative only. Whilst Lendlease endeavours to ensure that the information in this leaflet is correct, no warranty, express or implied, is given as to its accuracy.