

E I G H T Y E I G H T

BY JQZ



ST LEONARDS

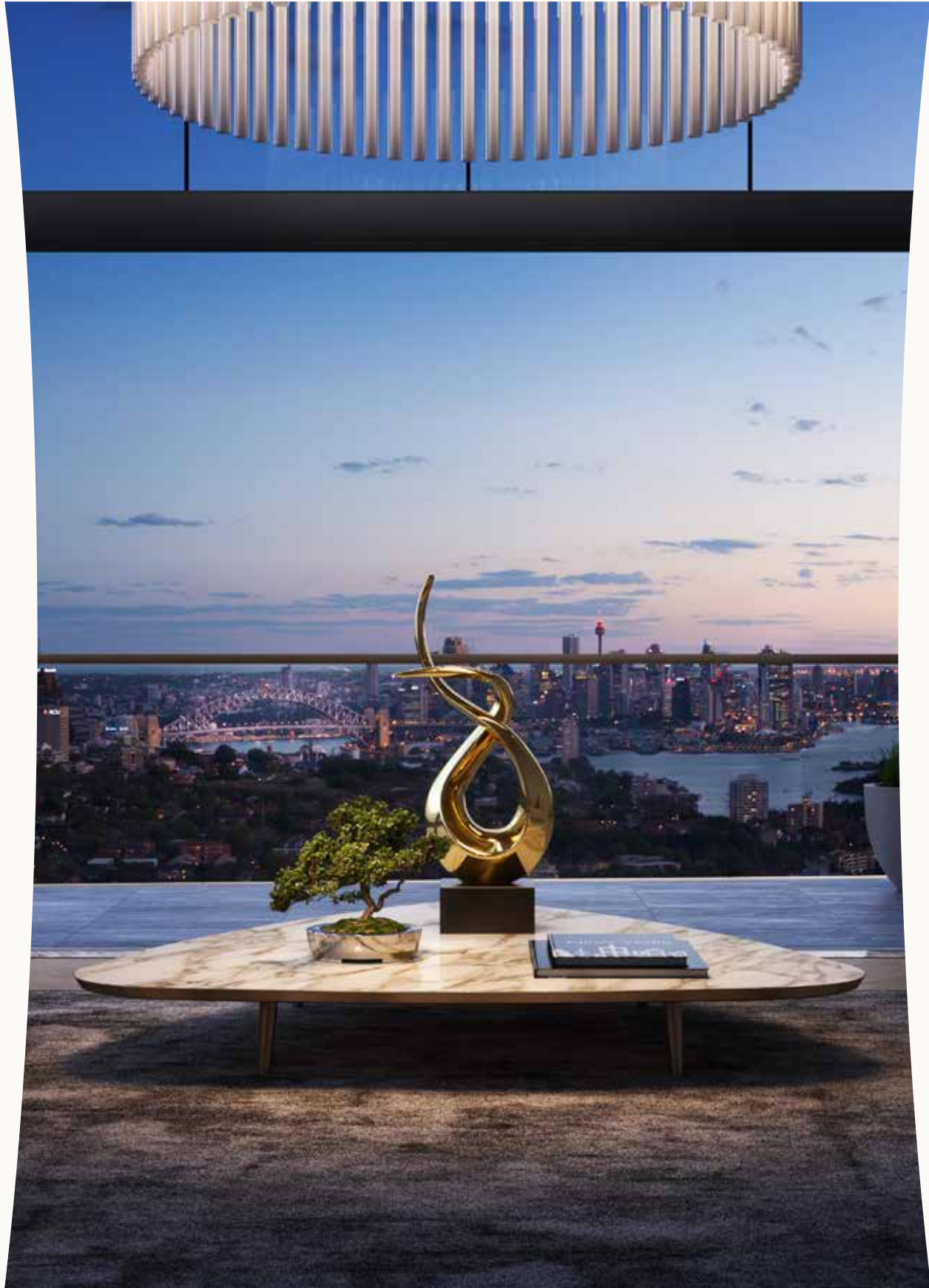






A STATEMENT FOR THE AGES

# A STATEMENT



FOR THE AGES



FIG

HT

Y



# EIGHT

## WELCOME TO EIGHTY EIGHT

*Eighty Eight embodies JQZ's reputation for creating visionary precincts and truly exceptional living environments. This \$1.6 billion project will be the centrepiece of St Leonards' monumental urban transformation, transforming Sydney's skyline and the lives of those fortunate enough to call it home. We invite you to be the first to experience a new statement for the ages: Eighty Eight by JQZ.*

Jian Qiu Zhang - Managing Director



THE JQZ  
EXPERIENCE  
COMES TO  
ST LEONARDS

With over \$8bn of properties either completed or underway, JQZ have a long term commitment to fulfilling the dreams of residents and building liveable, sustainable communities.

The JQZ vision is to create long-term relationships with clients and generate repeat business with buyers. JQZ achieves this through meticulous attention to detail, a dedication to excellence in every facet of process and careful planning.



RAMSGATE PARK  
KOGARAH

EMBLEM  
WATERLOO

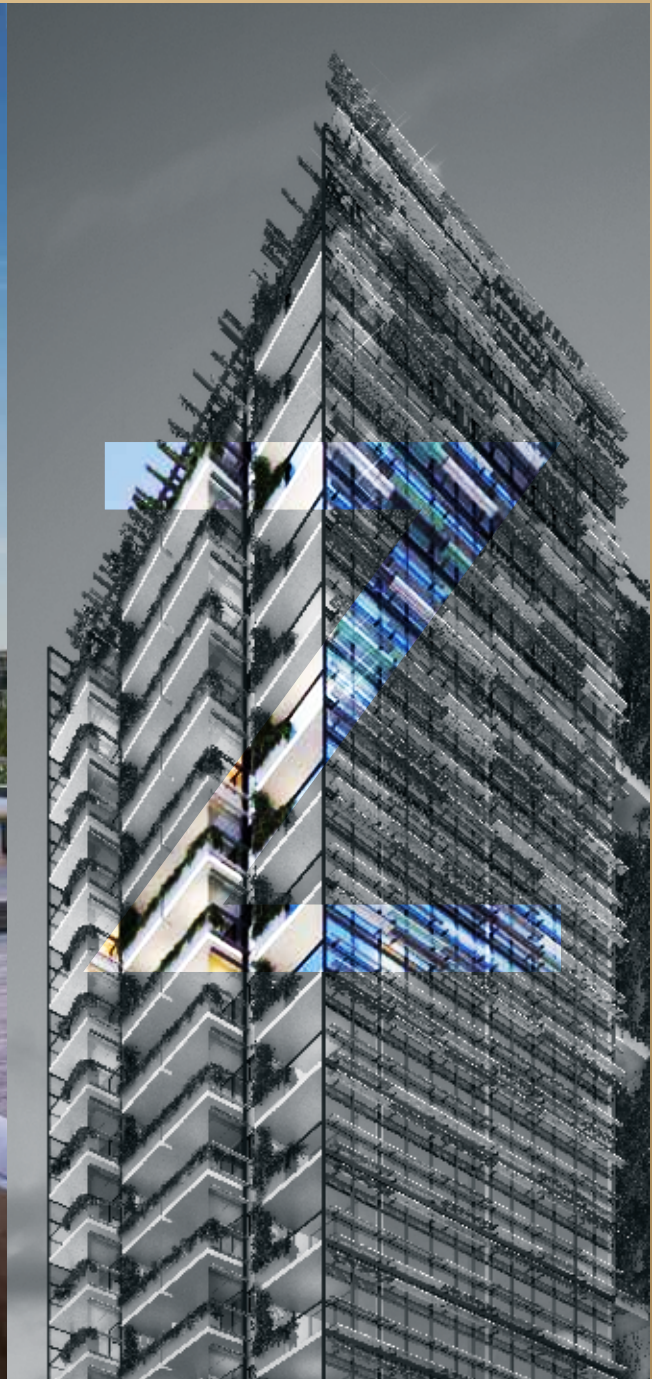




PRIME  
MACQUARIE PARK



VIVACITY  
SYDNEY OLYMPIC PARK



TOWER RESIDENCES  
WATERLOO





A VISION SHARED



AN ICON CREATED

“Eighty Eight’s bold architecture and imposing scale will have a dramatic impact on the skyline, reinforcing St Leonards as a key centre at the northern reach of the Sydney CBD. From a distance, its iconic form makes a monumental statement while, close up, it engages pedestrians below.”

*Simon Parsons - PTW Architects*







AN AGE OF WONDER





# Your Grandstand Seat To The Worlds Most Beautiful Harbour City

















## An Age Of Dynamism

Live magnificently in a dynamic and vital new precinct. Inviting multi-level public spaces and enchanting landscapes draw you in, creating a landmark destination and home at Eighty Eight's feet.

Soaring architectural buildings rise up around the open central plaza, a place to people-watch, browse and linger. Imaginative landscapes, laneway eateries, sunshine and greenery tempt residents, locals and suited workers alike out to mix and mingle.

Relax beneath cascading green walls. Stroll past the open-air diners on your way to and from the adjacent station. This new public realm is designed to lift the spirits bringing heightened appeal to St Leonards as a groundbreaking live-work-play precinct.



**\$1.6Bn**  
Centrepiece of  
St Leonards



**30,000m<sup>2</sup>**  
Commercial/  
Retail Precinct



**Brand New**  
Major  
supermarket



**Immersive**  
Global Dining  
Precinct





Day and night, the plaza and retail precinct provide a new focal point for St Leonards









A N A G E O F V I B R A N C Y





Eighty Eight's exciting new retail heart beats with a vibrancy that's hard to resist. A place that buzzes day and night, it will profoundly influence St Leonards' entire urban culture. Spanning four levels, this exciting new cosmopolitan marketplace and plaza with its laneway eat street, alfresco cafés and lifestyle retail will be a compelling destination for people from near and far. An enticing mix of café culture, bars, restaurants, essential supermarket shopping and Asian-influenced market stores promises Sydneysiders immersive, state-of-the-art retail experiences in an amazing social space.



# Dine In Style With Food To Suit Every Taste



## GLOBAL DINING PRECINCT

Gourmet dining

---

Eat street

---

Global flavours

---

Cafe culture

---



# A Brand New Shopping Experience For St Leonards



## CENTRAL SHOPPING HUB

Full line supermarket

---

Fine liquor

---

Fresh produce

---

Boutique shopping

---



**A Vibrant New  
Retail Precinct Will Satisfy  
All Your Shopping Needs**









## NEXT GENERATION PUBLIC LIBRARY

A cutting-edge library, designed for the digital age, will foster a heightened sense of community and neighbourhood.





## A NEW RETAIL & DINING CENTRE

Immersive new retail and dining experiences span four levels, placing a whole world of leisure and lively café culture at your door. Take in the aroma of freshly brewed coffee, engage with Sydney's finest providers and immerse yourself in a one-of-a-kind retail environment inspired by authentic marketplaces around the globe.





Gateway to world-class retail and dining







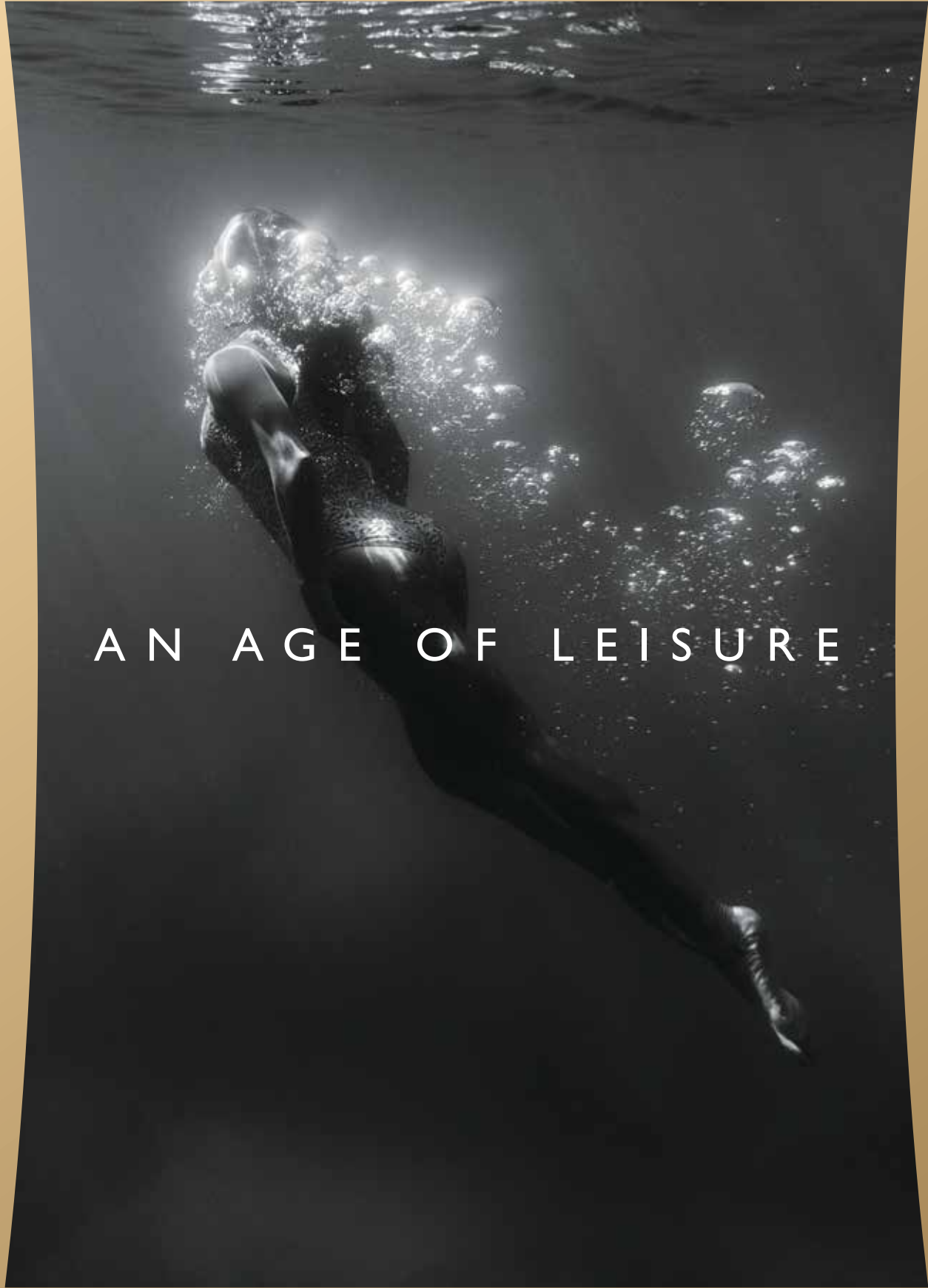


New alfresco plaza will provide much needed open leisure space for locals and residents alike









AN AGE OF LEISURE



## 88 By JQZ Will Redefine Apartment Luxury

Soaring upwards amidst Sydney's bright blue skies, Eighty Eight's incredible rooftop recreation deck, luxurious swimming pool and club house bestow an extraordinary level of amenity. Bask in the sunshine taking in the sweeping views. Dine alfresco under the sheltered pavilion. Eighty Eight gives its residents truly unforgettable and personalised living experiences.









# Head To The Rooftop Pool To See Sydney Harbour In All Its Glory



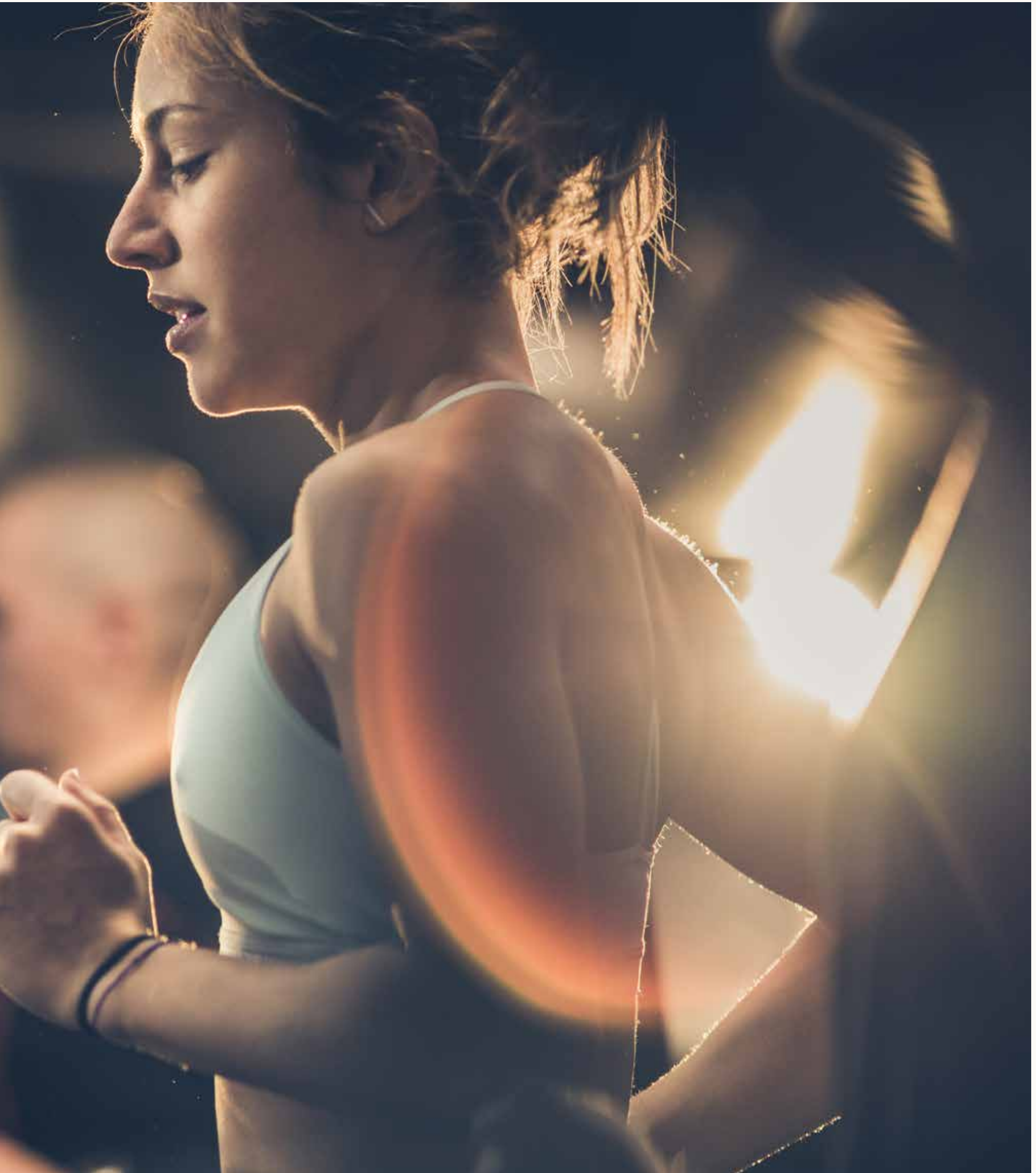




Keep Fit With Your  
Own On-Site Gym

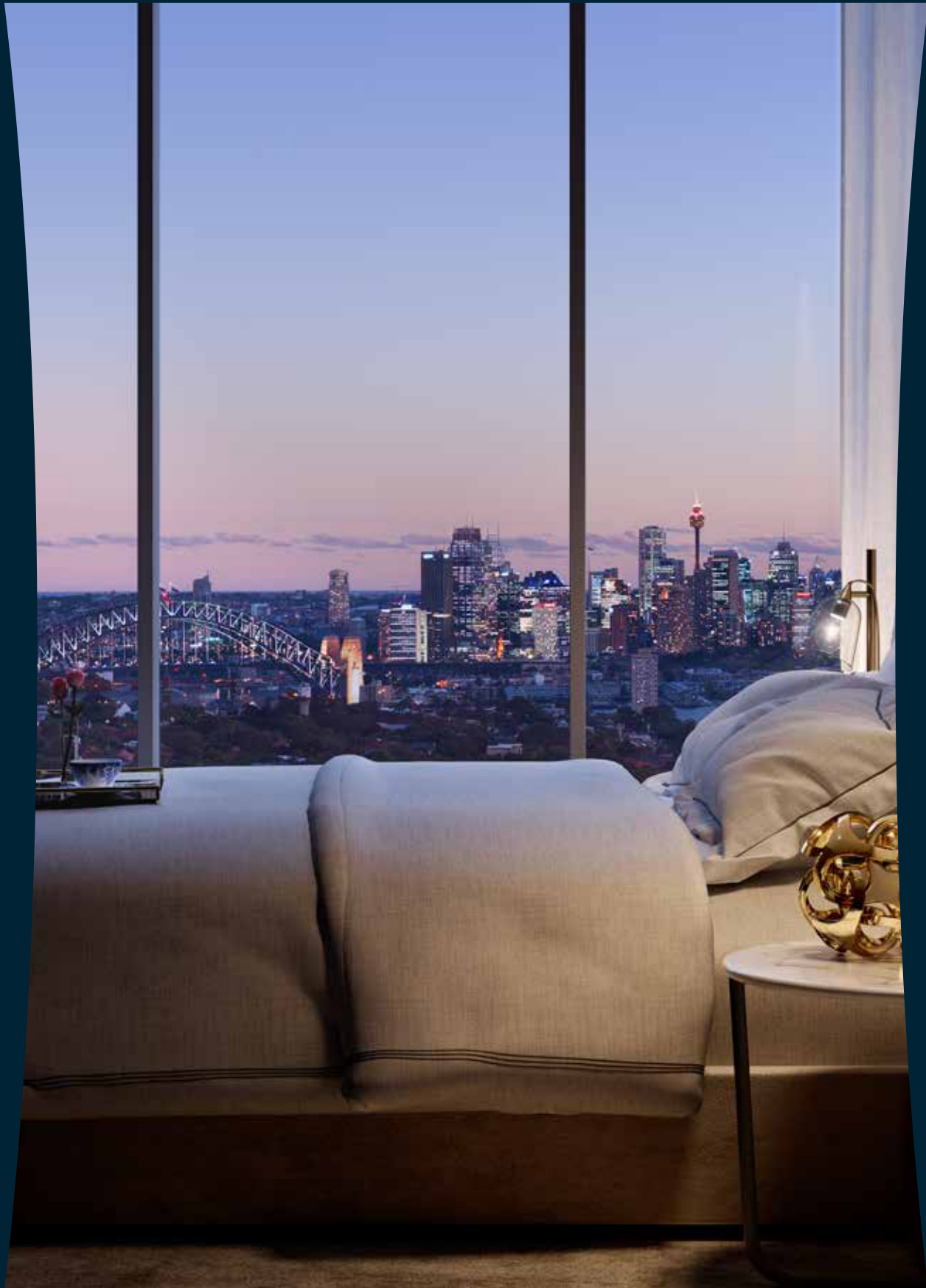








AN AGE OF



BEAUTY



“Our interior vision for Eighty Eight delivers a level of international design quality, unparalleled across Sydney’s North Shore. Drawing inspiration from the majestic qualities of the surrounding land, air and sea, they are unforgettable spaces that capture the imagination, reflecting the brilliance of Sydney and the natural canvas in which it sits.”

*Angus Henderson - Henderson & Co*









A STATEMENT FOR THE AGES





## AN AGE OF GLAMOUR

The opulent interior spaces are the epitome of elegance: a true celebration of Eighty Eight's sky-piercing landmark status. You'll see it in the luxury brands and fine material selections such as brass, stone and timber, all beautifully threaded together with sweeping design gestures and unique detailing.

Every aspect draws upon the stunning vistas that reach across the dramatic Sydney skyline out to the horizon. Superior planning optimises the signature views and interior flow, making the spaces perfect for both entertaining and family life.

The interior team has sought to create a sensory experience for those who live here – one that heightens the senses through inspired layers of light, shadow, texture and tone. These extraordinary residences bear all JQZ's signature hallmarks of unmatched amenity, superior luxury and immersive design.























## AN AGE PURE LUXURY

Floating amongst the clouds, Eighty Eight's premium kitchens feel light as air. Kitchen islands make a sculptural statement with their bespoke curved brass cladding, luxurious grey Caesarstone benches and elegant detailing. Upmarket Gaggenau appliances and integrated refrigerators bring high performance and striking good looks to the heart of the residences.











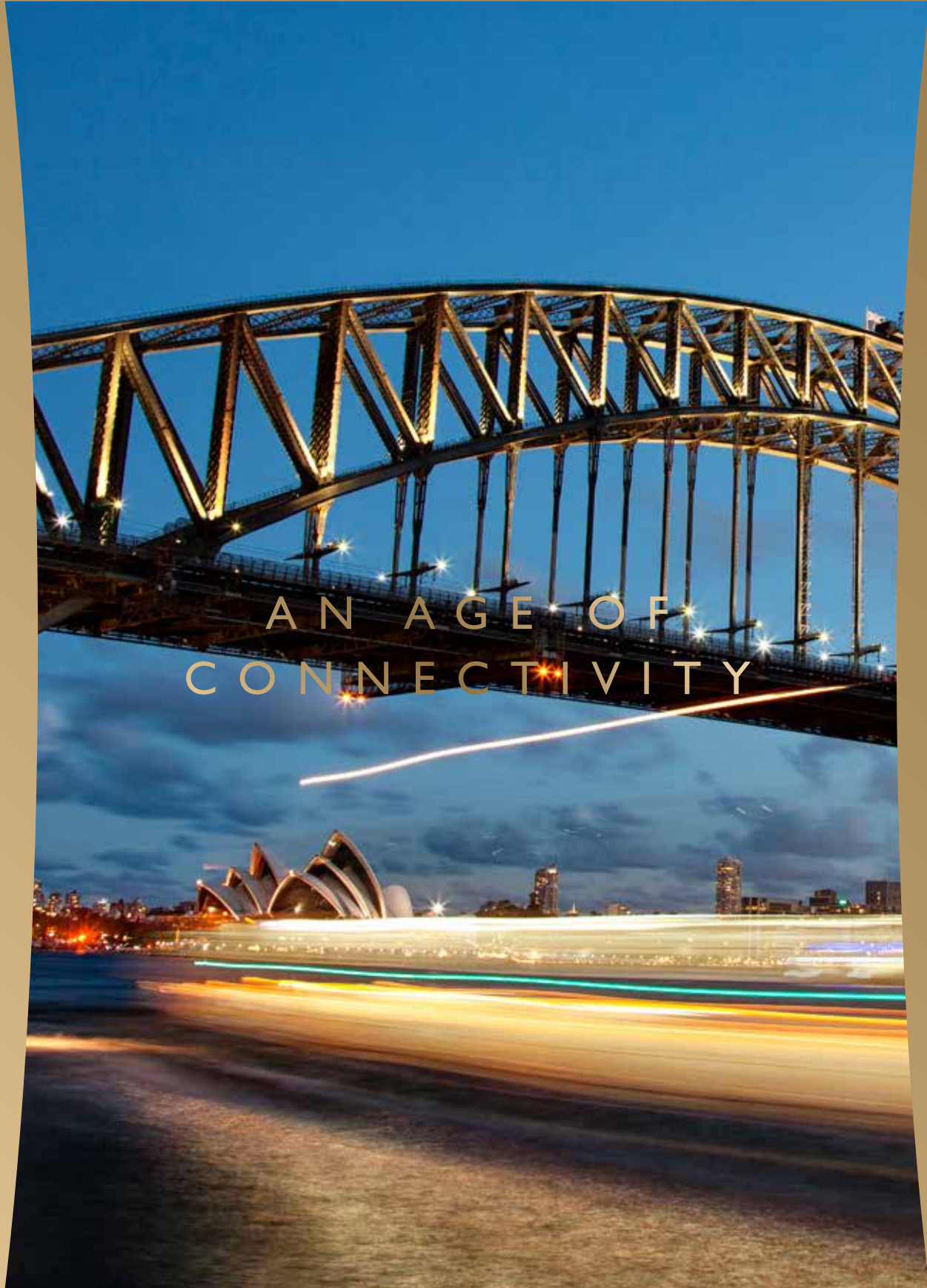
## AN AGE OF TRANQUILLITY

The luxuriously appointed bathrooms are awash in layers of luxury and seamless space. Soft, organic curves, such as those seen in the cabinetry, hint at the harbour's sinuous shoreline. A sea of pale grey tiles, laid in a textural herringbone pattern, ground the spaces in nature while custom brass handles and accents add glimmers of sparkling light.





AN AGE OF  
CONNECTIVITY





# The St Leonards Renaissance

There's never been a more exciting time to make St Leonards your home. This rapidly evolving suburb is coming of age as one of the most liveable city suburbs in Sydney. Paces from St Leonards Station and the new state-of-the-art metro stop, you're front and centre to the best Sydney has to offer. On your doorstep, the booming commercial district goes from strength to strength. A few steps away, cosmopolitan Crows Nest brings an ever more stylish village vibe to St Leonards' urban borders.

Midway between North Sydney, the CBD and Chatswood, you're central to high-impact shopping, some of this city's finest schools and the expanding Royal North Shore medical precinct, as well as the world-renowned pleasures of Sydney Harbour. Now is the time to share in the many rewards of a new world city suburb that is truly on the rise.

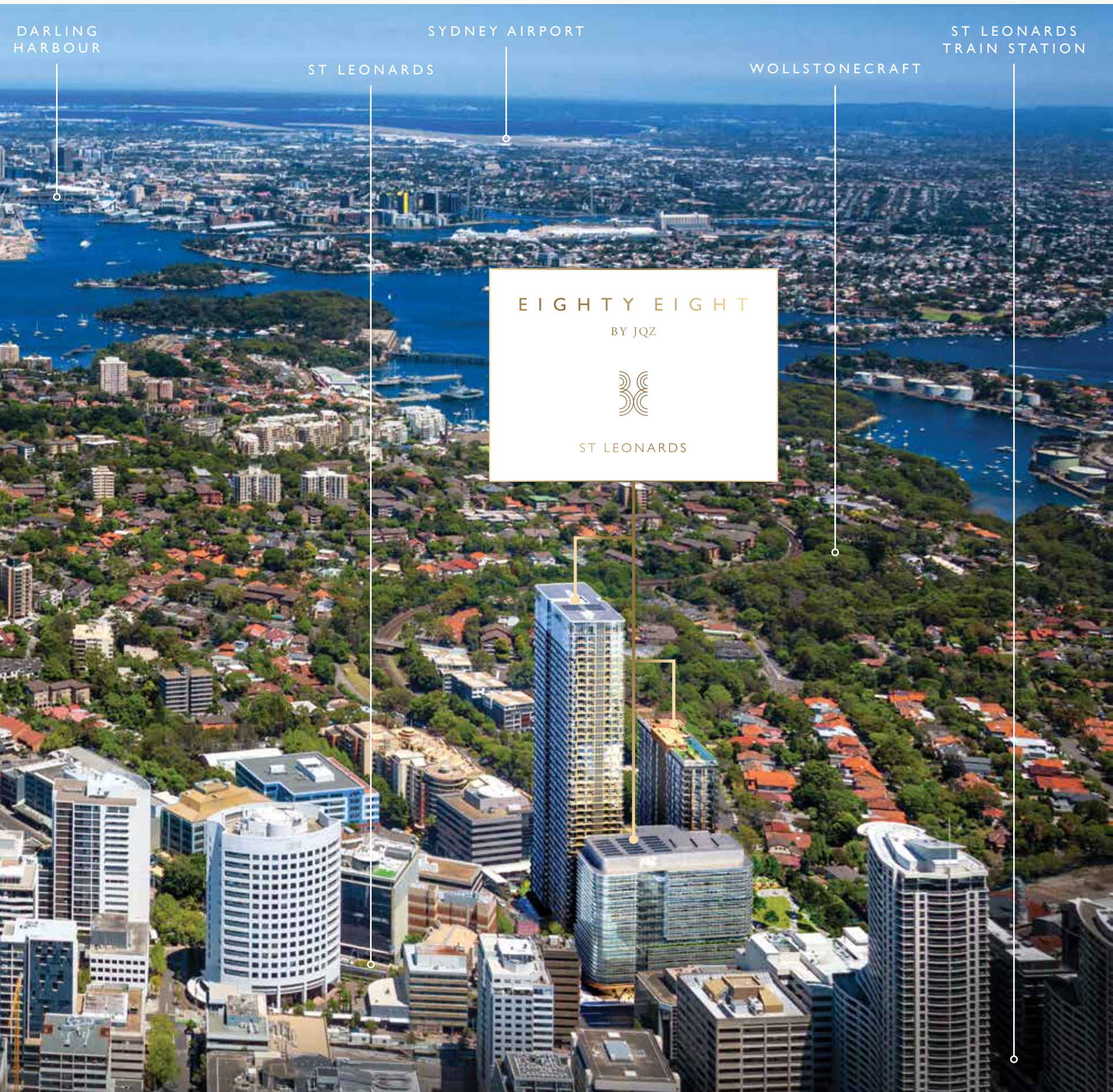






BE PART OF THE  
ST LEONARDS RENAISSANCE





Through a resurgence of residential and commercial development, retail and leisure venues, St Leonards has undergone a substantial transformation in recent years. Occupying prime position footsteps from St Leonards Station and new metro stations, you will be at the front and centre to enjoy the best our city has to offer. Enjoy a best of both worlds lifestyle, with St Leonards' vibrant centre at your doorstep and Sydney CBD at your fingertips.



# A Transformational Offering

The convenience of living opposite St Leonards Station is now further enhanced by a new Metro Station just 400m away.









# TRANSPORT



ST LEONARDS BUS INTERCHANGE



CROWS NEST METRO LINE



WARRINGAH FREEWAY ACCESS

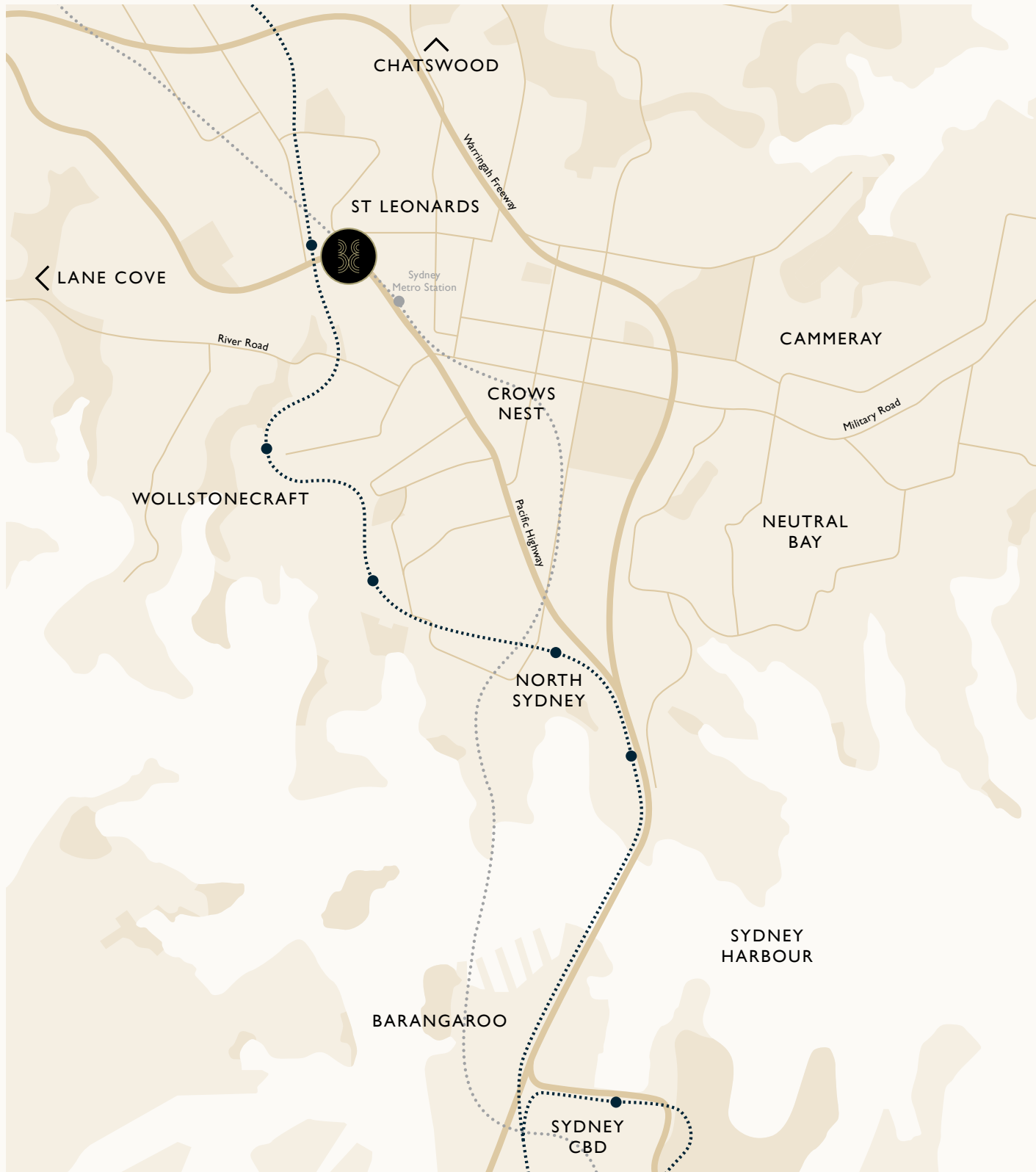


ST LEONARDS TRAIN STATION

Just 4km from Sydney CBD, St Leonards is prized for its easy citywide connections. St Leonards train station lies mere paces away and the upcoming rapid-ride metro is within a short stroll. For journeys further afield, seamless access to major arterial roads and motorways makes excursions across greater Sydney hassle free.



# PROXIMITY



**100m**  
From St Leonards  
Train Station



**400m**  
From Crows Nest  
Metro Station



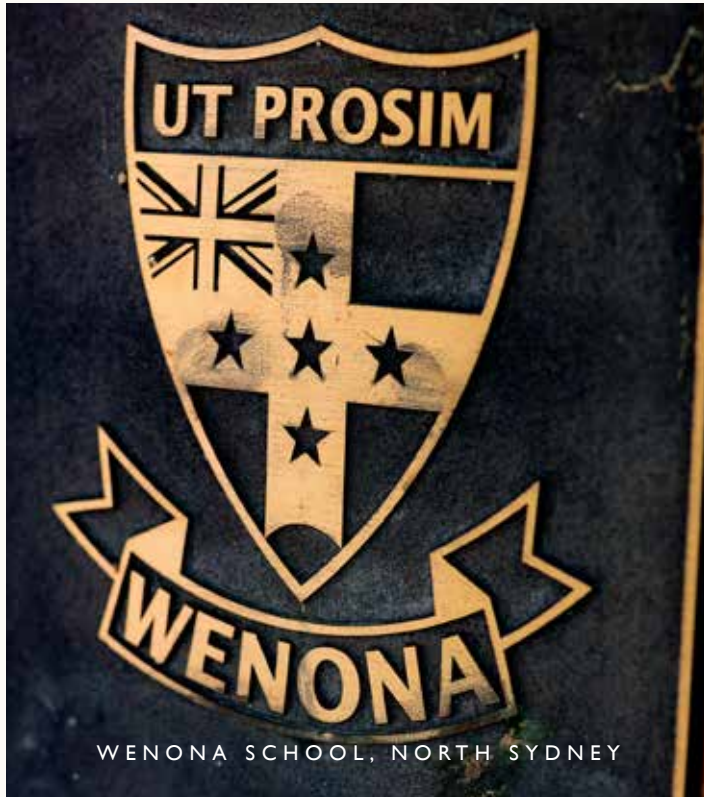
**15**  
Bus routes to Chatswood,  
Manly and the CBD



**Direct Access**  
To the Pacific Hwy for travel  
to Chatswood and the CBD



## SCHOOLS & HEALTH



For families, you're close to Sydney's finest public and private schools including Cammeraygal High School, Marist College, Monte Sant' Angelo Mercy College, SHORE and Wenona. The North Shore Medical Precinct is also nearby and currently undergoing a billion-dollar expansion as part of St Leonards' growth and renewal.





HIGH SCHOOLS

Cammeraygal High School

Marist College North Shore

Monte Sant' Angelo Mercy College

SHORE

Wenona

North Sydney Girls

North Sydney Boys

Redlands

PRIMARY SCHOOLS

Narremburn School

Anzac Park Public School

Neutral Bay Public School

St Mary's Catholic Primary School

Greenwich Public School

MEDICAL FACILITIES

Royal North Shore Hospital

Mater Hospital

Greenwich Hospital

North Shore Medical Centre

Crows Nest Medical Practice



# PARKS & RECREATION



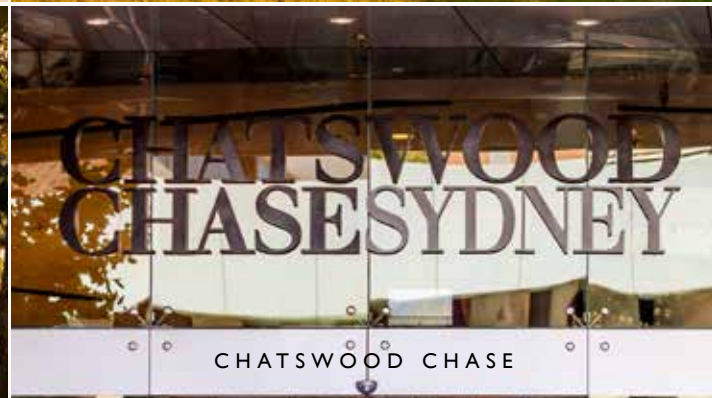
WESTFIELD CHATSWOOD



ST LEONARDS PARK



NORTH SYDNEY OVAL



CHATSWOOD CHASE



The North Shore's signature leafy streets, parks and gardens offer easy escape and sanctuary nearby. Head down to the harbour and throw out a picnic rug by the water. Explore the majestic national parklands. There's recreation and relaxation in equal measure with tennis and golf all within easy reach.



# RESTAURANTS & DINING



SMALL BAR, CROWS NEST



THE GROUNDS, NORTH SYDNEY



HAWKER LANE, CHATSWOOD WESTFIELD

All around you on-trend cafés, alfresco eateries and upmarket providores foster a lively cosmopolitan culture. Duck downstairs to Eighty Eight's own vibrant foodie precinct. Stroll to the lively dining and boutique design offerings in Crows Nest. Whatever your pleasure, you're steps from it all.







## JQZ DEVELOPER

JQZ is a successful Sydney based property Development Company with our own in-house building business established solely to undertake our construction works. This integration provides us with strict quality control over all projects. Since our inception we have grown substantially while still diligently maintaining the important family values instilled by our founder and Managing Director Jian Qiu Zhang.

With a strong focus on safety, quality and ethics, JQZ embraces changes and advancements within the industry and thrives on innovation, continuous improvement and best building practices. This allows us to deliver superior properties which any prospective purchaser would be proud to own.







**PTW**  
ARCHITECT

Architectural innovation and a sound reputation for high standards of design and planning are the principles PTW Architects has consistently delivered since inception in Sydney in 1889. PTW is well respected for excellence in architecture and master planning across a diversity of developments, with offices in Sydney, Beijing, Shanghai, Shenzhen, Hanoi, Ho Chi Minh City and Taipei.

PTW's work is diverse, innovative and aims to enhance the public realm through architectural excellence.

**PTW**







## ARCADIA LANDSCAPING

Arcadia Landscape Architecture are a talented team of landscape architects and urban designers focused on designing world class, contemporary environments. They understand these as being fundamentally intertwined with architecture, urban infrastructure and natural systems.

Arcadia aim to create memorable places that inspire community and diversity through innovative use of nature, design, sustainability and technology. They thrive on creating landscapes that bring people together, promote community connections and improve quality of life.

**ARCADIA**  
LANDSCAPE ARCHITECTURE

Disclaimer: This document and the information, images and diagrams contained herein (together, the "Information") has been prepared for marketing purposes only. The vendor reserves the right to without notice vary or amend all or any of the Information. The vendors, their associates and agents make no representations, warranties, promises or otherwise as to the suitability, accuracy, reliability, currency or completeness of the Information or that the images and diagrams depicted in this document are representative of the property / 88 St Leonards whether in whole or in part, once completed. Prospective purchasers should satisfy themselves as to the suitability, accuracy, reliability, currency or completeness of the Information by inspection or otherwise prior to relying on the Information, and where necessary seek independent advice. The vendor excludes, to the extent permitted by law, all liability for loss or damage arising from any reliance placed on the Information.

















JQZ

88BYJQZ.COM.AU