







SKY GARDEN

GLEN WAVERLEY

DISCOVER A LIFE  
OF BALANCE.

SKY GARDEN COMBINES  
THE ESSENTIAL  
ELEMENTS TO CREATE  
AN EXCEPTIONAL  
LIVING EXPERIENCE.

Inspired by the five elements of fire, earth, metal, water and wood, Golden Age Group has envisioned a place to live unlike anywhere else in Australia.

High above The New Glen shopping centre in the heart of Melbourne's most coveted eastern suburb, Glen Waverley, everything has been considered for a complete lifestyle experience. This is where an iconic address, distinctive architecture, abundant amenities, luxurious interiors and stunning gardens all come together in perfect harmony.



FIRE

# LIVE ABOVE THE ENERGY OF AN INTERNATIONAL RETAIL AND LIFESTYLE DESTINATION.



The New Glen is evolving. Melbourne's most impressive retail centre will soon be home to a two-level dining precinct, a fresh food market hall and a selection of more than 240 specialty retail stores.







AN INFINITELY  
CONNECTED ADDRESS.  
FROM PARKS TO RETAIL,  
EVERYTHING YOU NEED  
IS MOMENTS AWAY.

From the amenity of Sky Garden itself to the abundant options of The New Glen and the surrounding vibrant suburb of Glen Waverley, everything you need is never too far from home.







7:30 AM

### Coffee to start

Have breakfast on your private terrace or among the peaceful grounds of the podium gardens. There are even more appetising options downstairs at one of the many cafés at The New Glen.

8:30 AM

### Walk the kids to school

With many schools and kindergartens in the area, being able to walk your kids through the leafy streets of Glen Waverley in the morning will make for a great way to start the day.



10:00 AM

### Shop for essentials

With a world of food below you, shopping for essentials is a breeze. The New Glen's fresh food market hall has a range of local and European produce, as well as many Asian groceries.



11:30 AM

### Retail therapy

The latest collections from Australian and international fashion designers can be found among the many boutiques of The New Glen, ensuring your wardrobe is always current.



1:00 PM

### Have a light lunch

Like many things at Sky Garden, your dining options are limitless. Choose from several familiar venues downstairs at The New Glen or simply take in the view and dine al fresco in the gardens at home.



4:30 PM

### Walk to the cinema

With Village Cinemas on your doorstep, entertaining the family or relishing in a cultural fix is made simpler.

7:30 PM

### Have dinner downstairs

From dumplings to contemporary Italian, Japanese to Mexican, The New Glen's dining precinct caters to all palates and offers a world of choice for foodies.



10:00 PM

### The perfect night cap

Time for one more? Indulge in an evening cocktail at a local bar or in the quaint surrounds of the Sky Garden podium.

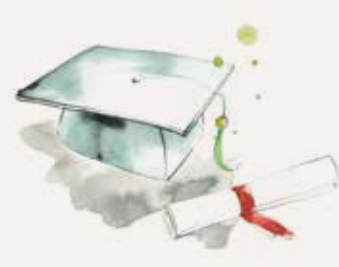


# The Jewel of Melbourne's East.



### TRANSPORT

Trains and buses are within walking distance and the freeway is just a short drive away.



### EDUCATION

From top-performing schools to world-renowned universities, highly sought-after educational institutions are all within close proximity to home.



### SHOPPING

Enjoy boutique shopping at The New Glen, or browse through a wide range of fresh produce.



### PARK LIFE

Step out for a walk through the many local parks and gardens on offer in Glen Waverley.



### RECREATION

Not only do you have beautiful greens at home, Sky Garden finds itself surrounded by the east's finest golf courses.



### COMMUNITY

The suburb of Glen Waverley is an established, vibrant, diverse and friendly neighbourhood.

Everything here offers an effortless lifestyle, from multiple transport options to wide green parks for recreation and relaxation.

This is an ideal location for families looking to take advantage of Melbourne's reputation as a centre for education. Glen Waverley Primary School and Glen Waverley Secondary College are both within the catchment zone of Sky Garden, with the world-renowned Monash and Deakin universities both close by for tertiary study.



#### KINGSWAY PRECINCT

1. Cafés
2. Bars
3. Vivid Nightlife
4. Restaurants
5. Strike Bowling
6. Village Cinemas
7. Glen Waverley Library

#### THE NEW GLEN

8. David Jones new 8,000m<sup>2</sup> store
9. Fresh Food Market Hall
10. Vibrant Outdoor Dining Precinct
11. Leading Fashion Brands
12. 240 New Specialty Stores & Kiosks
13. Prominent Food Gallery
14. Target, Aldi, Woolworths, Coles

#### EDUCATION

15. Glen Waverley Secondary College
16. Glen Waverley Primary School
17. Deakin University
18. Wesley College Glen Waverley Campus
19. Monash University
20. Glen Waverley South Primary School
21. Aust Centre of Chinese Studies

#### TRANSPORTATION CONNECTIONS







METAL

FORGED FROM  
A BOLD FUSION OF  
SCULPTURAL FORM  
AND ELEGANT  
MATERIALITY.



Rothelowman, one of Australia's most respected architectural studios, has created a true landmark address, heralding a new era for this rapidly evolving and coveted part of Melbourne's east.







Poised at the highest point of Glen Waverley, the sculptural design befits the significance of this landmark address.

With three towers rising above The New Glen, the form of Sky Garden is both confident and contemporary. The towers are individually distinctive while also sharing a design language of flowing lines and timeless materiality across the façade. Terraces feature abundant landscaping affording residents lush outlooks and providing the towers with their signature garden character.







Artist's Impression  
Dandenong Ranges, Eastern Aspect





WATER

PRIVATE AND SERENE,  
AMENITIES REFLECT  
A SPACE TO ENTERTAIN  
AND UNWIND.



Each of the communal spaces at Sky Garden are designed as a natural extension of your home. For residents, a world of exclusive luxury awaits every day.





Artist's Impression  
Formal Lounge



# INTRODUCING SKY GARDEN CLUB: YOUR PRIVATE WORLD.

As with the world's finest luxury resorts, Sky Garden Club delivers an exceptional lifestyle with access to unparalleled private and dramatic spaces for entertaining and relaxing.







Artist's Impression  
Formal Lounge



RELAXATION

With an open plan yoga studio, outdoor Tai Chi areas, steam room and more, relaxation and wellness are a celebrated part of life at Sky Garden.

TRANQUILITY

From the elegantly-appointed library and intimate studying areas to the private lounges and outdoor terraces, Sky Garden is brimming with quiet places for time alone.



FITNESS

Keeping active is easy with a fully-equipped gym and dedicated outdoor fitness areas, as well as a luxurious pool designed to bask in abundant natural light.



DINING

Reserve a private dining room and terrace, invite friends to a barbecue, or enjoy meals outside in a beautiful setting.

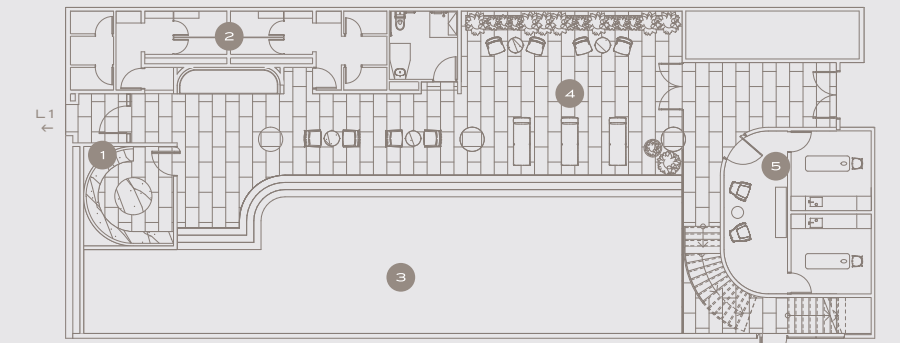
ENTERTAINMENT

Enjoy a film, sporting event or video games in Sky Garden Club's private cinema exclusive to residents and their friends.

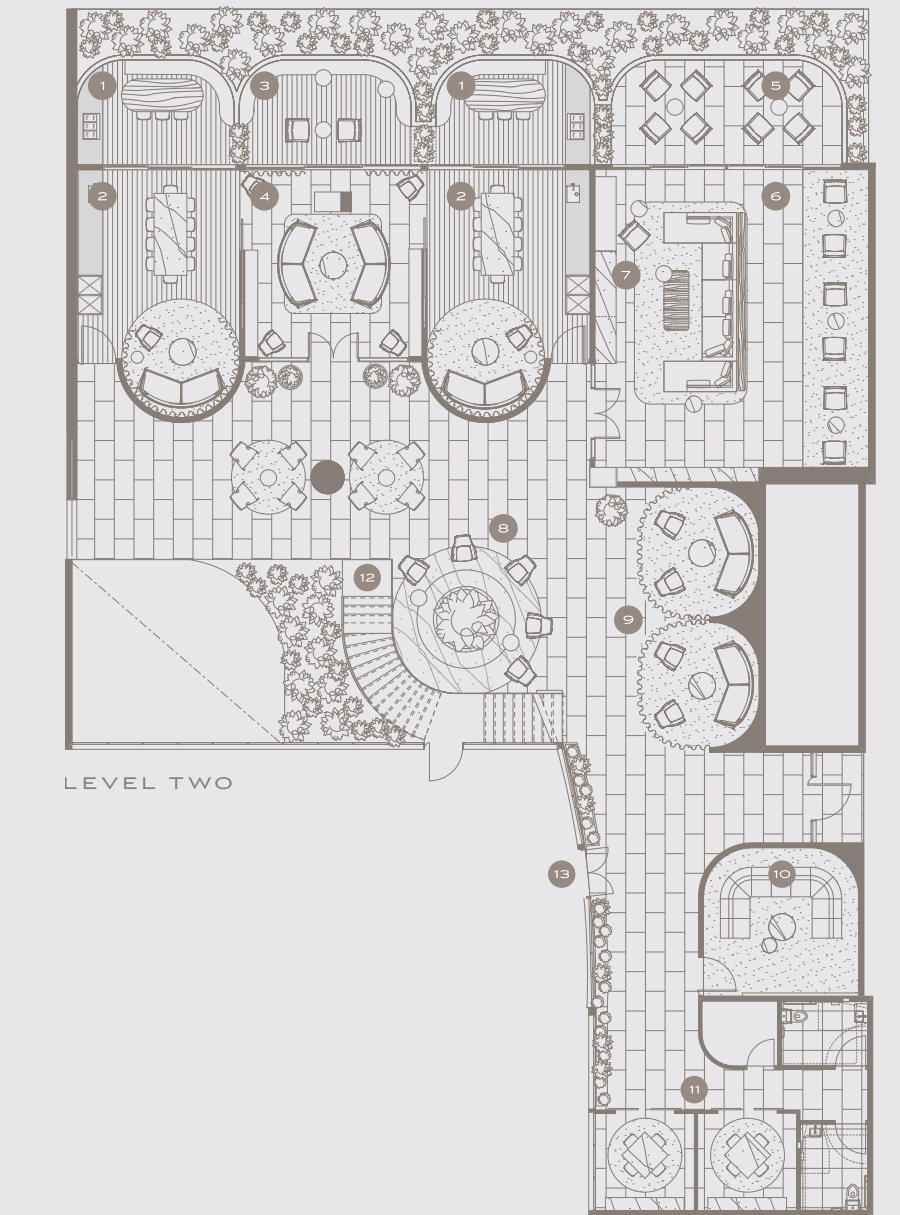


GAMING

Private gaming areas make gathering friends for a game of Mahjong, chess, cards or poker easier than ever.



LEVEL ONE MEZZANINE



LEVEL TWO

LEVEL ONE*	LEVEL TWO	
L1. Yoga and Gym	1. Dining Terrace	8. The Garden Lounge
	2. Private Dining Rooms	9. Private Lounges
LEVEL ONE MEZZANINE	3. Library Terrace	10. Cinema
1. Steam Room	4. Library	11. Mahjong Rooms
2. Change Rooms	5. Formal Lounge Terrace	12. Grand Staircase
3. Swimming Pool	6. Formal Lounge	13. Gardens
4. Pool Lounge	7. Fireplace	
5. Wellness Centre		

\*Level One accessible through Level One Mezzanine.









Artist's Impression  
Private Dining Room





Artist's Impression  
Pool





Artist's Impression  
Garden Lounge



EARTH

EXPERIENCE THE  
BEAUTY THAT IS AN  
EVER-CHANGING  
GARDEN IN THE SKY.



Sky Garden offers shade, sun and space to enjoy fresh air, with a series of podium gardens unlike anything in Australia. Set high above the world below, residents have the opportunity to share the space with friends or retire to the grounds to unwind.





Artist's Impression  
The Southern Garden



A SERENE AND PRIVATE  
OASIS EXPRESSED  
ACROSS 4,000M<sup>2</sup> OF  
ELEVATED, CURATED  
OPEN GARDENS.

A place to relax amid the beautiful resident-only gardens, Sky Garden takes contemporary urban living to a new level. Offering a place to entertain, relax and unwind, the podium outdoor spaces at Sky Garden have been designed with all generations in mind.



Artist's Impression  
The Southern Garden





BAR & LOUNGE

Meet friends and neighbours in the inviting surrounds of the entertainment lounge or simply unwind with a relaxing drink or book at the end of the day.



RELAXATION ZONE

Find serenity in the private relaxation zone; a space for you to enjoy fresh air and the warmth of the sun, just beyond your door.



VEGETABLE GARDEN

Nurture and grow your own produce while enjoying the benefits of fresh air and physical activity. It is here where you will find a moment of zen as you tend to the vegetable garden.



PLAY AREA

Designed with families in mind, this is a space tailored specifically for children where they can explore and play safely together.



## The Northern Garden

The Northern Garden has a focus on socialising with a play space designed for children and sun lounges where adults can relax into the evening. The cabana lounges and barbecue allow for easy entertaining, while vegetable gardens allow residents to enjoy getting back to nature.



## The Southern Garden

The Southern Garden features a range of outdoor spaces, from large lawn areas to private dining spaces, with outdoor barbecue and fitness areas. Set amongst lush greenery and water features, these gardens offer an opportunity to relax, entertain and stay healthy.



WATER FEATURE

As you listen to its calming sounds, the water feature instills a sense of tranquility across the gardens.



PRIVATE DINING

Private lounges and shared tables make the perfect spot to enjoy meals with family and friends.



EXPANSIVE LAWN

These secure lawns are the perfect place for children to play while friends and family gather for shared outdoor activities.



FITNESS AREA

Take a yoga, meditation or group fitness class in the outdoor fitness area surrounded by beautifully manicured greenery.



The communal spaces afford residents the luxury of creating their own herb and vegetable gardens.

Designed by you, for you, the communal vegetable gardens allow residents the opportunity to refine their gardening skills while enjoying time with like-minded residents.



Artist's Impression  
Vegetable Gardens  
The Northern Garden







Enjoy long lunches by day and dinners under the stars at night. With a series of outdoor moments, al fresco dining at Sky Garden reflects the ambience of some of the world's greatest luxury hotels.

A range of exclusive cabana lounges and intimate entertaining spaces provide a picturesque location for enjoying time together with family and friends, surrounded by nature.















WOOD

INTERIORS ARE  
DESIGNED TO INSPIRE  
LIFE AND ENHANCE  
LONGEVITY.



With people and their aspirations in mind, Golden Age Group and DKO Architecture have created a collection of residences to suit a range of lifestyles and profiles; from growing families, to downsizers and single professionals.





A relaxed sense of luxury fills every space and provides seamless connections to the private gardens and panoramic views outside.

Sky Garden residences command exceptional views of the majestic Dandenong Ranges all the way to the city skyline. Surrounded by one of Melbourne's greenest and most picturesque neighbourhoods, views from Sky Garden can only be described as breathtaking.









Artist's Impression  
Two Bedroom Living







Every element of the interiors has been inspired by the natural world.

The residences at Sky Garden have been designed to deliver a sense of nature at every turn. Light-filled spaces are complemented by neutral colour palettes and textures that act as a reminder for the gardens that adorn Sky Garden.







Artist's Impression  
Three Bedroom Bedroom









Artist's Impression  
Three Bedroom Living





Artist's Impression  
Three Bedroom Terrace



WITH CUSTOM-DESIGNED  
INTERIORS, YOUR HOME  
AT SKY GARDEN IS  
FINELY TUNED TO YOUR  
LIFESTYLE.

Golden Age Group recognises that no two residents are alike, and it's for this reason that custom modules have been designed to expand upon the storage options of each apartment.

With three formats to choose from, residents are bound to find a unit that suits their needs.

## Sky Garden Scheme

The distinct moment where the earthly garden meets the sky.



Artist's Impression  
Two Bedroom Kitchen

A carefully curated palette of soft eucalyptus coloured joinery, grey elm timbers and brushed Swiss brass metallic accents.

### THE EXPLORER

Every modern home needs a media hub. This joinery module gives its users a clever cable management and device charging zone; or the perfect place to display books and collected possessions.



## Dawn Scheme

Inspired by the diffused light of an early morning sky.



Artist's Impression  
Two Bedroom Kitchen

Crisp white joinery and stone contrasts against warm pink-hued oak timbers and vibrant brushed-bronze metallic accents.

### THE ENTERTAINER

For the discerning residents who enjoy entertaining their guests. This chic bar unit features honed marble and metallic framed tinted glass doors. It is the perfect place to store and prepare that pre-dinner party aperitif.

## Dusk Scheme

Recreating the atmospheric conditions of an evening's sunset.



Artist's Impression  
Two Bedroom Kitchen

Cool grey joinery and textured stone contrasts with rich earthy timber grains and bright bronze feature metals.

### THE ORGANISER

Designed for those who like to keep things in order. This joinery unit fits in seamlessly within the residents interior scheme, keeping clutter organised and out of sight.

## Sky Garden Scheme

The distinct moment where the earthly garden meets the sky.



Artist's Impression  
Two Bedroom Kitchen

A carefully curated palette of soft eucalyptus coloured joinery, grey elm timbers and brushed Swiss brass metallic accents.

### THE EXPLORER

Every modern home needs a media hub. This joinery module gives its users a clever cable management and device charging zone; or the perfect place to display books and collected possessions.



THE PERFECT BALANCE  
OF NATURE AND  
CONSIDERED DESIGN.

Every element of the interiors has been considered with erudite residents in mind, balancing smart, functional and sophisticated design.

## Sky Garden Scheme

The distinct moment where the earthly garden meets the sky.



The Sky Garden Scheme bathroom uses modern smoked grey mirror to create a dramatic background for feature brushed brass custom-designed tapware, accessories and grey elm timber vanity.



## Dawn Scheme

Inspired by the diffused light of an early morning sky.



Artist's Impression  
Two Bedroom Bathroom

The Dawn Scheme bathroom features deep bronze tapware and accessories, contrasting against pale pink oak timber custom vanity. An expansive bronze tinted mirror gives the Dawn bathrooms a luxurious hotel suite ambience.

## Dusk Scheme

Recreating the atmospheric conditions of an evening's sunset.



Artist's Impression  
Two Bedroom Bathroom

The Dusk Scheme bathroom features a brighter bronze metallic tapware paired with a rich dark textured timber vanity. The same expansive bronze tinted mirror gives the Dusk bathrooms a luxurious hotel-like quality.

## Sky Garden Scheme

The distinct moment where the earthly garden meets the sky.



Artist's Impression  
Two Bedroom Bathroom

The Sky Garden Scheme bathroom uses modern smoked grey mirror to create a dramatic background for feature brushed brass custom-designed tapware, accessories and grey elm timber vanity.





Opéra  
Melbourne



No.85 Spring Street  
Melbourne



The Harrington Collection  
The Rocks, Sydney

Golden Age Group is an established name in the property industry, renowned for its exceptional commercial and residential projects throughout Australia.

For over a decade, Golden Age Group has been part of changing Melbourne and Sydney's landscapes, shaping the skylines that we see today.

Victoria One has recently been completed and stands as the tallest residential tower in Melbourne's CBD. Other notable projects include Opéra on St Kilda Road, Sky One in Box Hill, Collins House on Collins Street and No.85 Spring Street in the distinguished east end of Melbourne's CBD.

Golden Age Group's Sydney projects include No.1 Lachlan in Waterloo, Essence Double Bay and The Harrington Collection, set in the highly-coveted and exclusive area of The Rocks.

Since developing the first five-star hotel in Melbourne CBD, Sheraton Melbourne, Golden Age Group has partnered with Starwood Capital Group in developing future plans to expand their hotel portfolio.

**GOLDEN AGE**  
>

[GOLDENAGEGROUP.COM.AU](http://GOLDENAGEGROUP.COM.AU)



DEVELOPMENT PARTNER

## Vicinity Centres

Vicinity Centres reimagine destinations of the future, creating places where consumers love to connect. As one of Australia's leading retail property groups, Vicinity Centres is listed on the Australian Securities Exchange (ASX) as Vicinity Centres (ASX:VCX). Vicinity Centres currently owns \$16.1 billion of retail assets and manages some \$26.1 billion in assets across the full retail asset spectrum.

VICINITY.COM.AU



LEAD ARCHITECT

## Rothelowman

Established in 1991 and led by respected architects and industry specialists, Rothelowman is a dynamic architectural and interiors practice that is helping to shape Australia's commercial and residential landscape. The practice aims to always present solutions that create long-term value for its clients and the broader community.

ROTHELOWMAN.COM.AU

**rothelowman**



DEVELOPMENT PARTNER

## Time & Place

Time & Place Property Pty Ltd was founded in 2015 to create a new story in property development. Established by Tim Price, this development studio brings together a team of industry experts with diverse experience across the residential and mixed-use development space.

TIMEPLACE.COM.AU

**TIME & PLACE**

INTERIOR DESIGNER

## DKO Architecture

The passionate and accomplished interior design team at DKO focuses on sharp, intelligent and articulated design. With understanding of how a space works, moves and moulds with the user, DKO's intuitive approach encourages collaboration on each project, bringing individual strengths and varied experience to maintain a crisp, lively and reflective angle on their designs.

DKO.COM.AU

**DKO**



PROJECT PARTNER

## Probuild

Probuild is one of Australia's largest and most successful construction companies, and a national leader in large residential and multi-use projects. Probuild provides an end-to-end service, encompassing all facets of project delivery, construction planning and management.

PROBUILD.COM.AU

**PROBUILD**



LANDSCAPE ARCHITECT

## Aspect Studios

ASPECT Studios is committed to providing the best in creative design for landscape architecture and urban design. The studio team designs for people and places, acknowledging the entire lifecycle of a project, and outperforming both client and community expectations.

ASPECT-STUDIOS.COM

**ASPECT Studios™**





SKY GARDEN

GOLDEN AGE  
V

© 2018 Golden Age Enterprises Pty Ltd  
Level 39, 120 Collins St, Melbourne VIC 3000

While Golden Age Enterprises Pty Ltd (Aust) has endeavoured to ensure the information in this document is correct, it is to be used as a general guide only. Representations of the development are artist's impressions and indicative only. In particular, the plans, images, dimensions, sizes and areas, facilities, amenities, colour schemes, look and feel of finishings, position of the connection points, infrastructure, number of lots, the configuration of these and other information contained in this document (Development Information) are indicative only and may change depending on a range of variable factors including, but not limited to, council building approvals and planning consents, market conditions, finance and government and municipal requirements. As a result, the Development Information is preliminary only and subject to change without notice as the development progresses. The furniture and home decorator items shown are not included with any sale and you must refer to the contract for sale for the list of inclusions. We recommend that you undertake your own enquiries, obtain independent legal advice and confirm the current Development Information at the time you enter into any contract of sale. This document does not constitute part of an offer or contract. Golden Age Enterprises Pty Ltd (Aust), its agencies and related entities do not make any representations or give any warranties that the information set out in this document is or will remain accurate or complete at all times and they disclaim all liability for harm, loss, costs or damage which arises in connection with any use or reliance on the information.







[SKYGARDENRESIDENCES.COM.AU](http://SKYGARDENRESIDENCES.COM.AU)